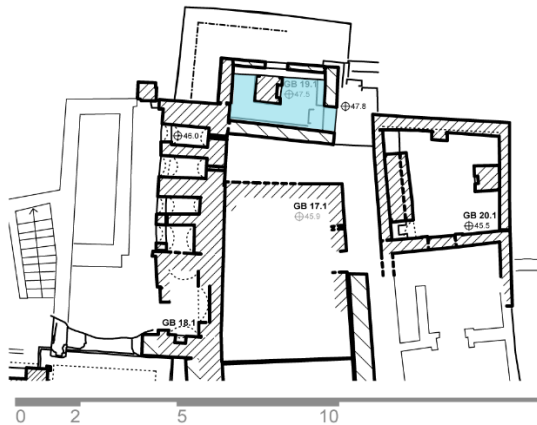
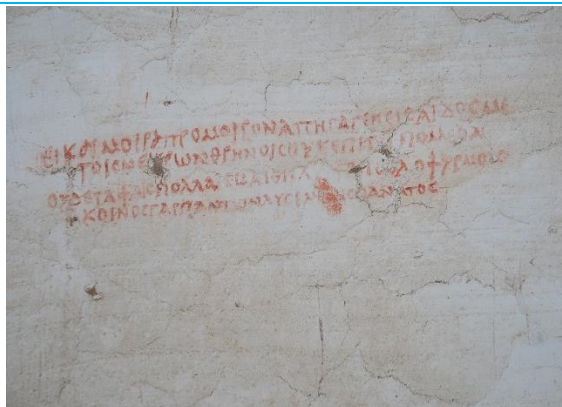
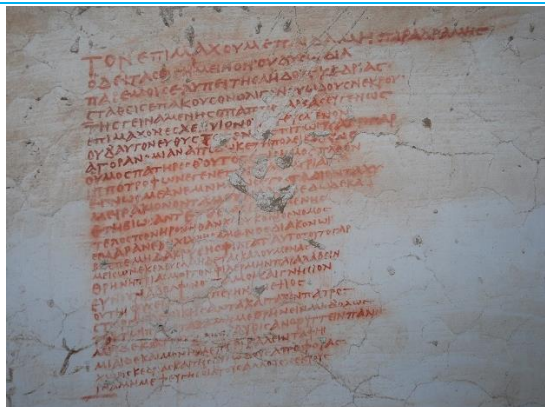


# Tomb no. GB 19 (Epimachos)



## Description of the interior design

A stuccoed and painted tomb stele in a shelter house built by adobe masonry. The stele is built into the northern wall, so three sides are visible. The stele core is constructed of adobe masonry covered with a lime plaster finished with whitewash. On the front side the stele is decorated with red Greek inscriptions underneath a small niche.



## Tomb no. GB 19 (Epimachos)

<b>Treatment</b>	
<p>The tomb house has been opened by force in June 2018. A big hole was broken into the pillar. The painted inscriptions are destroyed. A lot of small fragments of the painted plaster are laying on the front and the back side at the foot of the pillar. The lime plaster fragments are mixed with fragments of adobe bricks.</p> <p>In October 2018 emergency measures were done. The many fallen-off plaster fragments of the inscriptions were sorted out and cleaned by using soft brushes. The evaluation of the remaining fragments showed that a serious amount of the inscriptions are lost and what is left, is shattered in a lot of small pieces. The fragments were collected into separated boxes and stored in the tomb.</p>	
	
<b>Condition after treatment</b>	
<p>The tomb house is closed by a sealed door. Additionally the window is closed by wooden shutters. In respect of the last incident, it is desirable to establish a maintenance and monitoring programme for the future.</p>	
<b>Status: October 2018</b>	