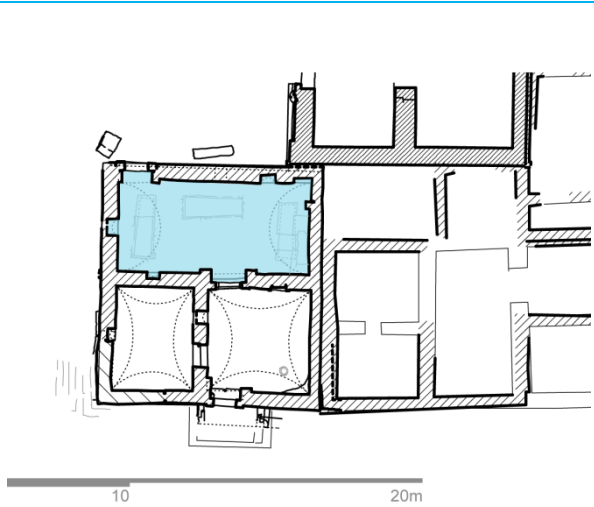


## Tomb no. GB 42 (Gabra no. M 18/CP)



### Description of the interior design

The rectangular room was the main room of a three-room tomb house. The adobe masonry is coated with a lime plaster with a finish of whitewash. The white room was decorated singular paintings in Egyptian style with god figures and a carriage on the northern wall.





Originally, the room had a ceiling construction in form of a barrel vault, today's roof is reconstructed in a simple and flat form. Lost areas of the original plaster have not been repaired.

### Condition before treatment

The plaster layers are partially lost and expose the sun-dried clay brick masonry (adobe). Where visible, the adobe masonry shows a structurally destabilised and sanding surface. There are lots of insects' eating traces in the adobe structure.

The architectural surface is lined with cracks. Additionally, the plaster layers are detached from the adobe masonry, being endangered to falling off. In particular, the painted plaster layers on the northern wall are very fragile. Collapsed plaster fragments could be found on the floor.

## Tomb no. GB 42 (Gabra no. M 18/CP)

<b>Condition before treatment</b>	
<p>The paint layers are reduced. Partially, the paint layers show deterioration phenomena like flaking. There is a layer of dust and dirt on everything.</p> <p>An intervention is necessary to halt active deterioration and preserve the original plaster.</p>	
	
	
<b>Treatment</b>	
<p>In the field school of 2014 the condition of the remaining plaster and paint layers was assessed and documented. The wall painting fragments, which collapsed in early 2013, were examined and grouped together, as far as possible. The fragments were secured, documented and stored separately.</p>	
<b>Condition after treatment</b>	
<p>Further treatment is essential to guarantee long-term conservation.</p> <p>The interior of this tomb house is open to the elements and human action. In this respect, it would be desirable to establish a maintenance and monitoring programme for the future.</p>	
<b>Status: October 2014</b>	